



bksb Stand-alone Installation

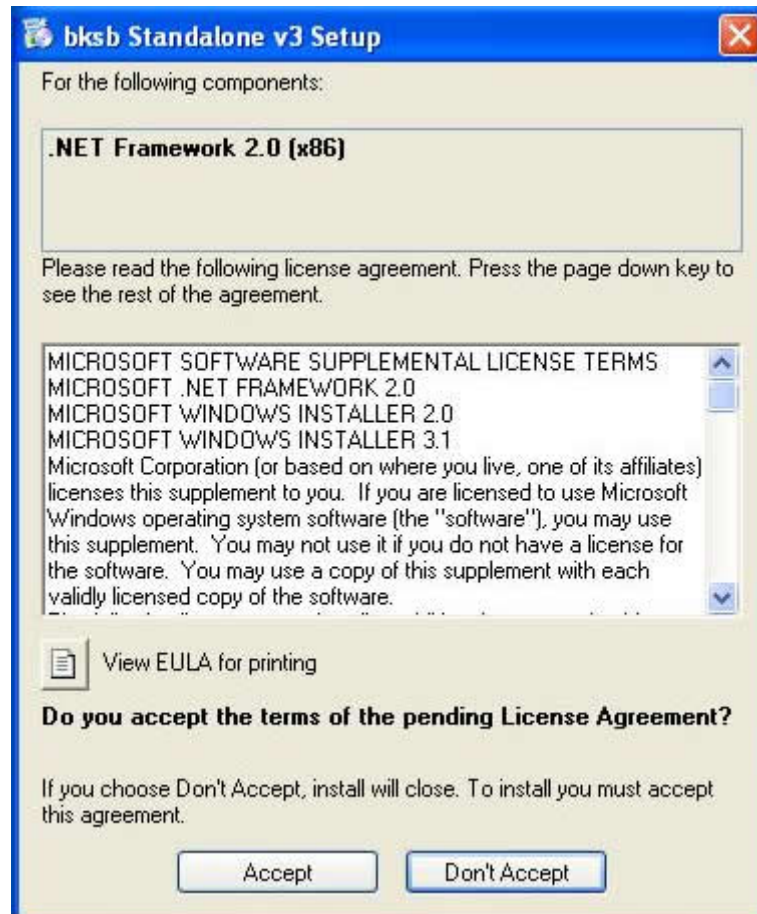
Technical Guide



Technical Support

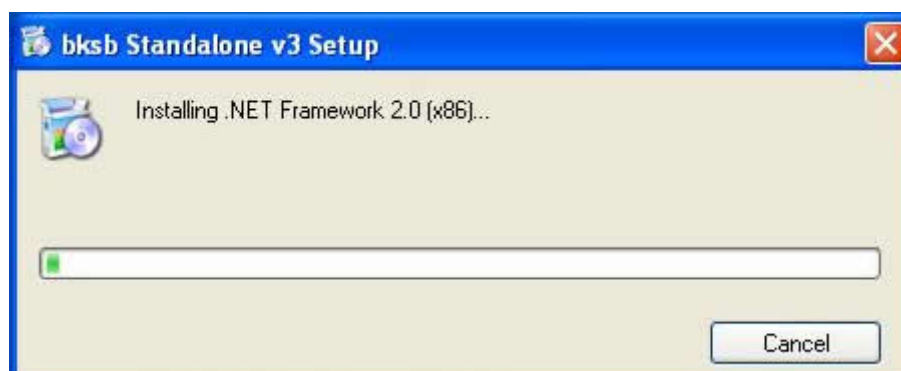
bksb offer a technical service to identify an organisation's technical needs, create company-specific reporting and integrate to a current database.

1. Insert the CD into the PC to install bksb.
2. When the CD menu appears, click to install the stand-alone version.
3. After a few seconds, you may receive a dialog similar to [Figure 1]. If this appears, it means that you are missing a required component.



[Figure 1]

4. Click Accept and a screen similar to [Figure 2] will appear which will display the progress of the components' installation.



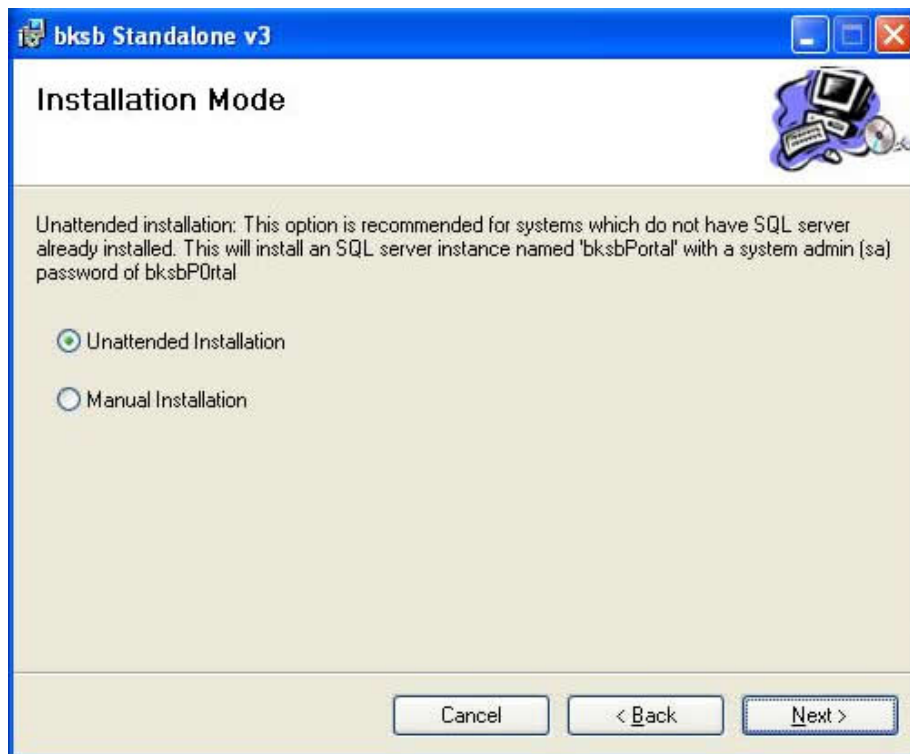
[Figure 2]

5. After these components have been installed, you may need to restart the computer. If asked to do so, then please click 'yes' to reboot. After the reboot, the installer will continue with your product installation.
6. You will now receive a Windows installer welcome screen [Figure 3].
7. Click Next.



[Figure 3]

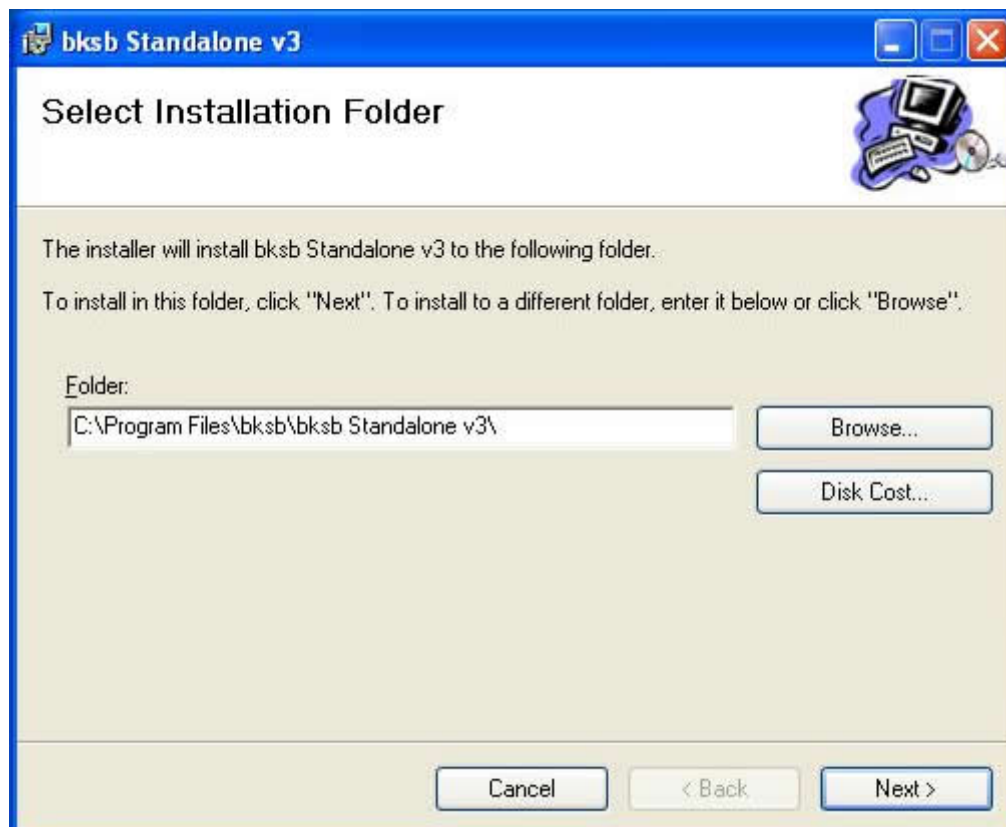
8. You will now be asked which installation mode you wish the setup to run in [Figure 4] There are 2 options to choose from:
 - a. **Unattended Installation** (Default Option) is recommended as this will install SQL server with an instance name of BKSBPORTAL which will then be fully configured ready for use by the bksb software.
 - b. **Manual Installation** This option will allow you to select which SQL instance you wish to create the database on. The Database Configuration tool will be launched after setup is complete.
9. After selecting the installation mode, click Next.



[Figure 4]

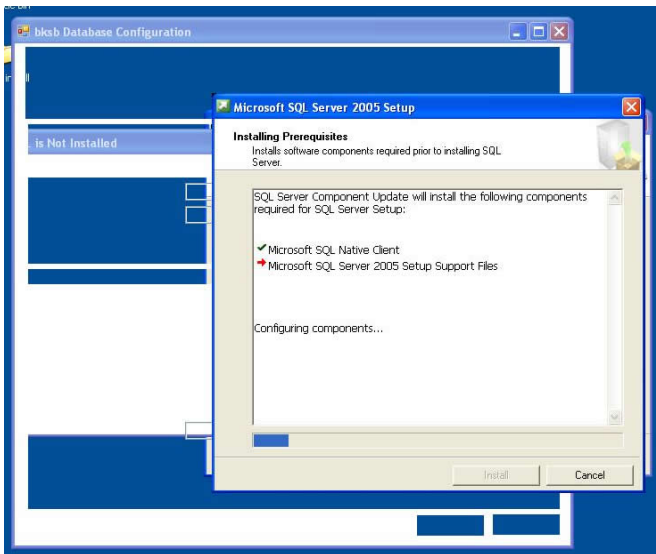
10. **Select Installation Folder:** This can be left as default.

11. Click Next.

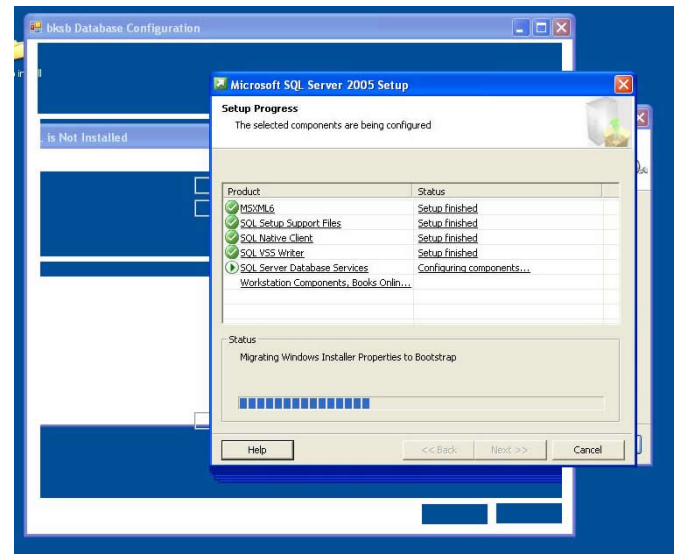


[Figure 5]

12. The installation will now commence and may take up to 10 minutes depending on your machine specification.
13. After the setup has finished copying the necessary files, the flash player installation will be launched which may take a minute to process. (This is just a small dialog with a green progress bar.)
14. After Adobe Flash player has finished installing, you will receive a dialog window as in [Figure 6] and [Figure 7]. This will start the automated installation of the BKSBPORTAL instance.



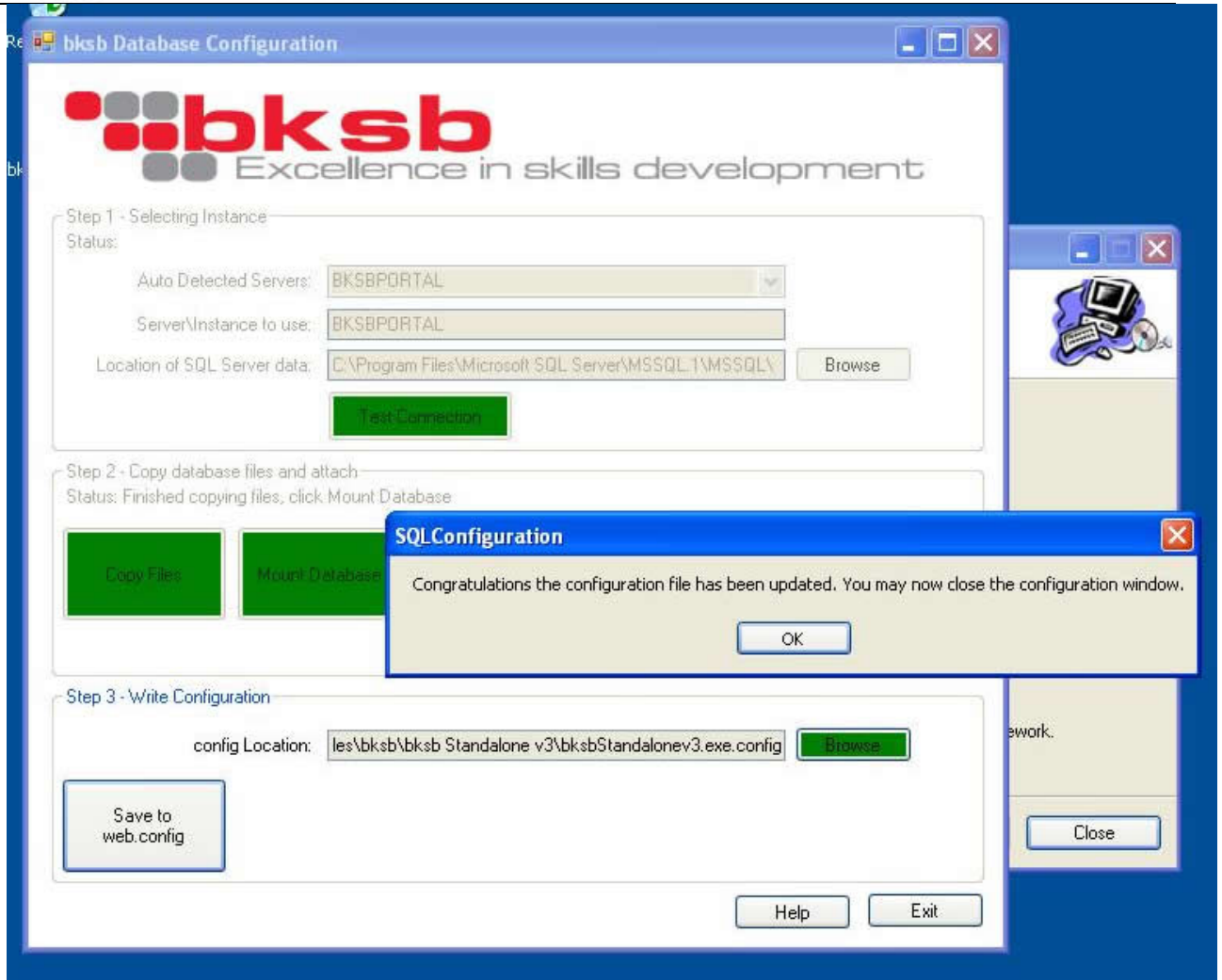
[Figure 6]



[Figure 7]

15. After SQL server has been successfully installed, the configuration tool will restart and do the following:
 - a. Select or enter SQL server details
 - b. Test SQL Connection
 - c. Create Database
 - d. Create Tables
 - e. Create Views
 - f. Create Procedures
 - g. Insert Data
 - h. Create a SQL bksb user with a password of 'bksb'
 - i. Create database permissions for the user bksb
 - j. Write the application's configuration file

16. When the configuration tool is complete, you should receive a message box saying "Congratulations the configuration file has now been updated. You may now close the configuration window." [Figure 8]



[Figure 8]

17. Click OK.
18. Click Exit.
19. You may now open bksb from the start menu.
20. Start > All Programs > bksb > bksb Portal.
21. bksb should now be installed and working.

There are advanced settings in the bksbStandalonev3.exe.config file (which can be opened using notepad) which allow you to:

Change the Results Location: `<add key="ResultsLocation" value="" />`

Simply change the value="" to value="C:\Results" if you were wanting to save all results to C:\Results.

You must copy the current results folder to this location to keep the results structure and image files.

Allow Learners to Create their own Reference: `<add key="AllowRegistration" value="true" />`

If the value is set to **true**, then if a user types a reference in which is not in the database, a screen will appear asking them if they wish to create the user with the reference, first name and surname supplied.

If the value is set to **false** and a reference number is not found in the database, they will receive a validation window stating that no reference was supplied.