

bksb Web Installation

Technical Guide



Installation of the software by your technical/MIS team

bksb cannot prescribe how your technical team install the bksb software because institutions operate under a variety of internal procedures. However, there follows a **suggested** set of shortcuts on the desktop (these could be a staff intranet link or favourites link) to enable both learners and teaching staff to quickly access appropriate areas of the bksb software.

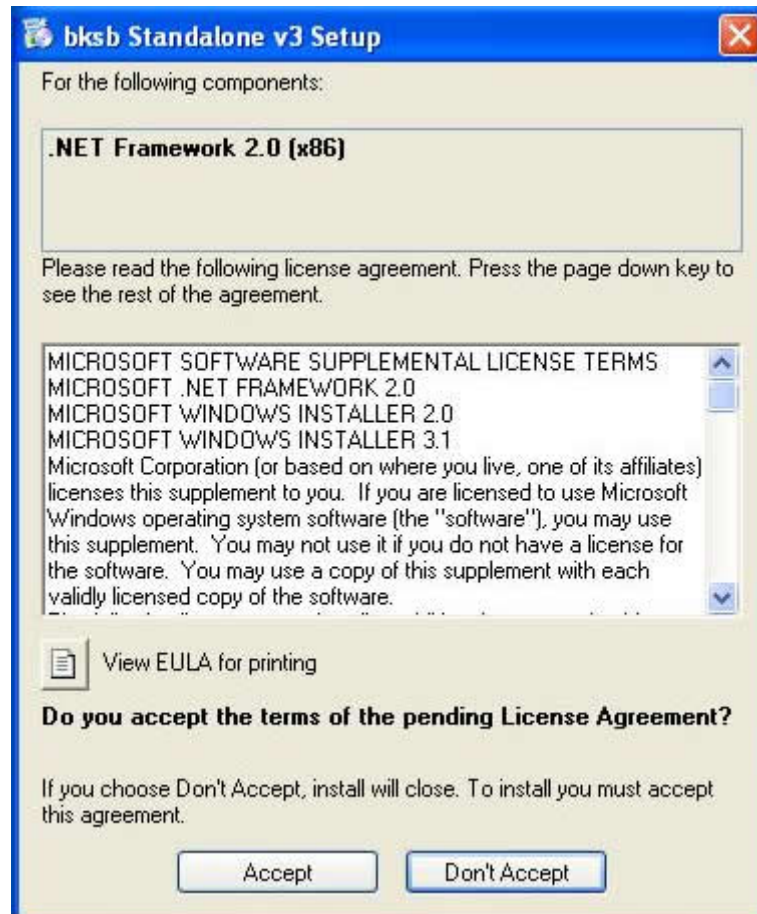
This installation suggestion appears in both the bksb technical guide and the bksb tutor guide to promote effective liaison between the technical and teaching teams.

SHORTCUT NAME	ACCESS BY	SCREEN TAB	CONTENT/NOTES
bksb learner portal	Learner and tutor	Assessments Results Edit Details	Initial assessment Diagnostic assessment Skill Checks Completed and part-done assessments Edit learner DOB, GCSE results etc
bksb group profile	Tutor (A generic tutor password can be set by your technicians)	Group Tracking Grids Learner Results Learner Admin IA Summary Group Manager	Skill gaps for all learners in a group for managing teaching input Searching for learners, viewing learner results and editing details Creating new groups or new learners Master list of all initial assessments by group. After clicking on a group name, see link to Excel for data manipulation Collecting learners from a master list of all learners to copy their results into additional groups
Resources (Learner)	Learner		Interface for instant access to: <ul style="list-style-type: none"> any English or mathematics learning resource.
Resources and answers (Tutor)	Tutor (A generic tutor password can be set by your technicians)		Master interface for instant access to: <ul style="list-style-type: none"> any English or mathematics learning resource, answers and suggested teaching activities.
Answers (Learner) Optional	This is optional as the tutors may not wish learners to have the answers		Master interface for instant access to: <ul style="list-style-type: none"> the answers to any English or mathematics learning resource.

bksb Technical Guide for your technical/MIS team – covers installation, set-up procedures, data validation, results saving and databases.

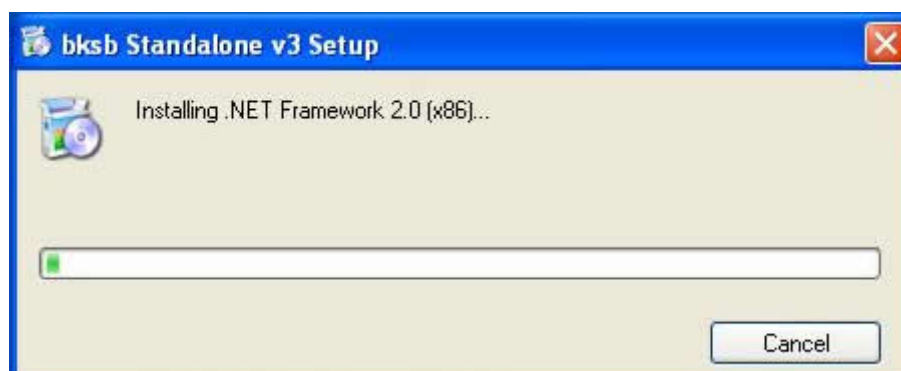
Technical Support - bksb offer a service to identify an organisation's technical needs, create company-specific reporting and integration to a current database.

1. Insert the CD into the PC to install bksb.
2. When the CD menu appears, click to install the web version.
3. After a few seconds, you may receive a dialog similar to [Figure 1]. If this appears, it means that you are missing a required component.



[Figure 1]

4. Click Accept and a screen similar to [Figure 2] will appear which will display the progress of the components' installation.



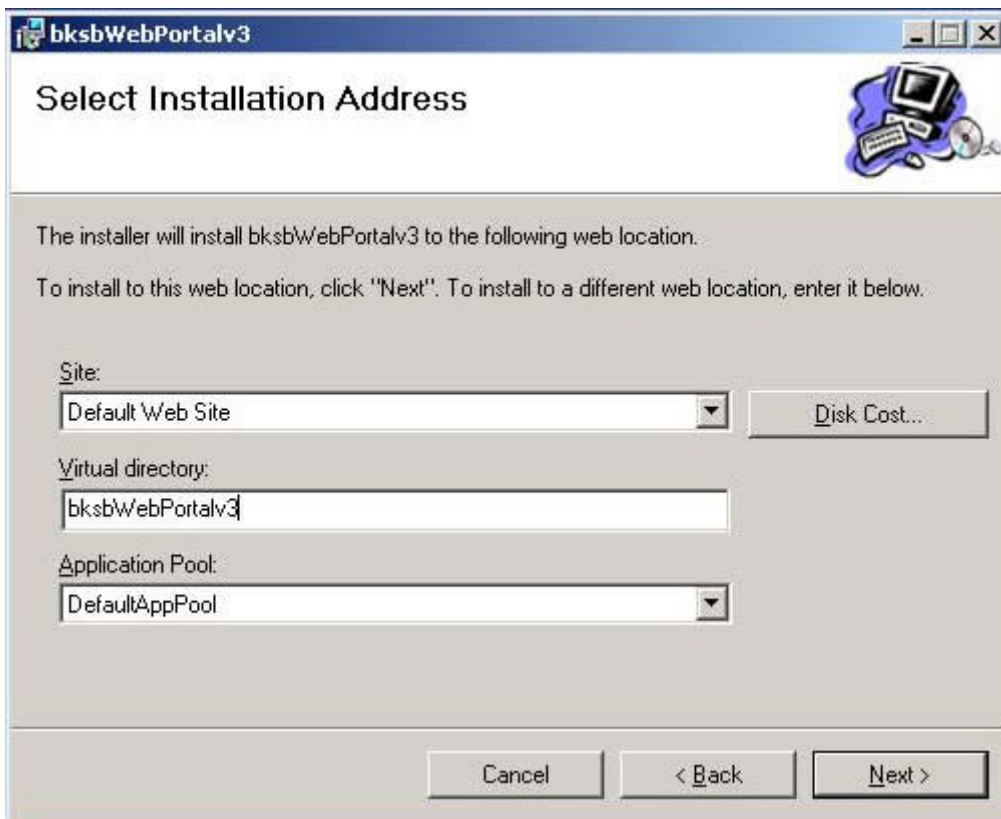
[Figure 2]

5. After these components have been installed, you may need to restart the computer. If asked to do so, then please click 'yes' to reboot. After the reboot, the installer will continue with your product installation.
6. You will now receive a Windows installer welcome screen [Figure 3].
7. Click Next.



[Figure 3]

8. You will now receive a screen with the following options [Figure 4]:
 - a. **Site:** This specifies the IIS website to install bksb to. This is most commonly changed when SharePoint is installed, as it installs before "Default Web Site". Therefore, you will need to change this dropdown to prevent any conflicts.
 - b. **Virtual Directory:** The Virtual Directory box is used to specify the name that you want your server to use. For example, if your server was called 'bksb' and you wanted the virtual directory name to be 'bksb_Portal', you would navigate to http://bksb/bksbv_Portal in order to access the bksb software.
 - c. **Application Pool:** The Application Pool can be ignored in this software as it automatically creates an application pool with the name "ASP.NET 2.0". The automated creation of the Application Pool is done, as the Microsoft .NET Framework 1.1 can't run alongside any other version of the .NET Framework within the same application pool.
9. Click Next.



[Figure 4]

10. Now you will receive a Confirm Installation window. Click next [Figure 5].



[Figure 5]

The Database Configuration Tool

We have now automated the entire setup of the bksb database, as SQL is a mandatory component.

Below is a direct copy of the Technical Guide for the bksb Database Configuration utility.

Using the bksb Database Configuration Utility

Configuring the SQL server

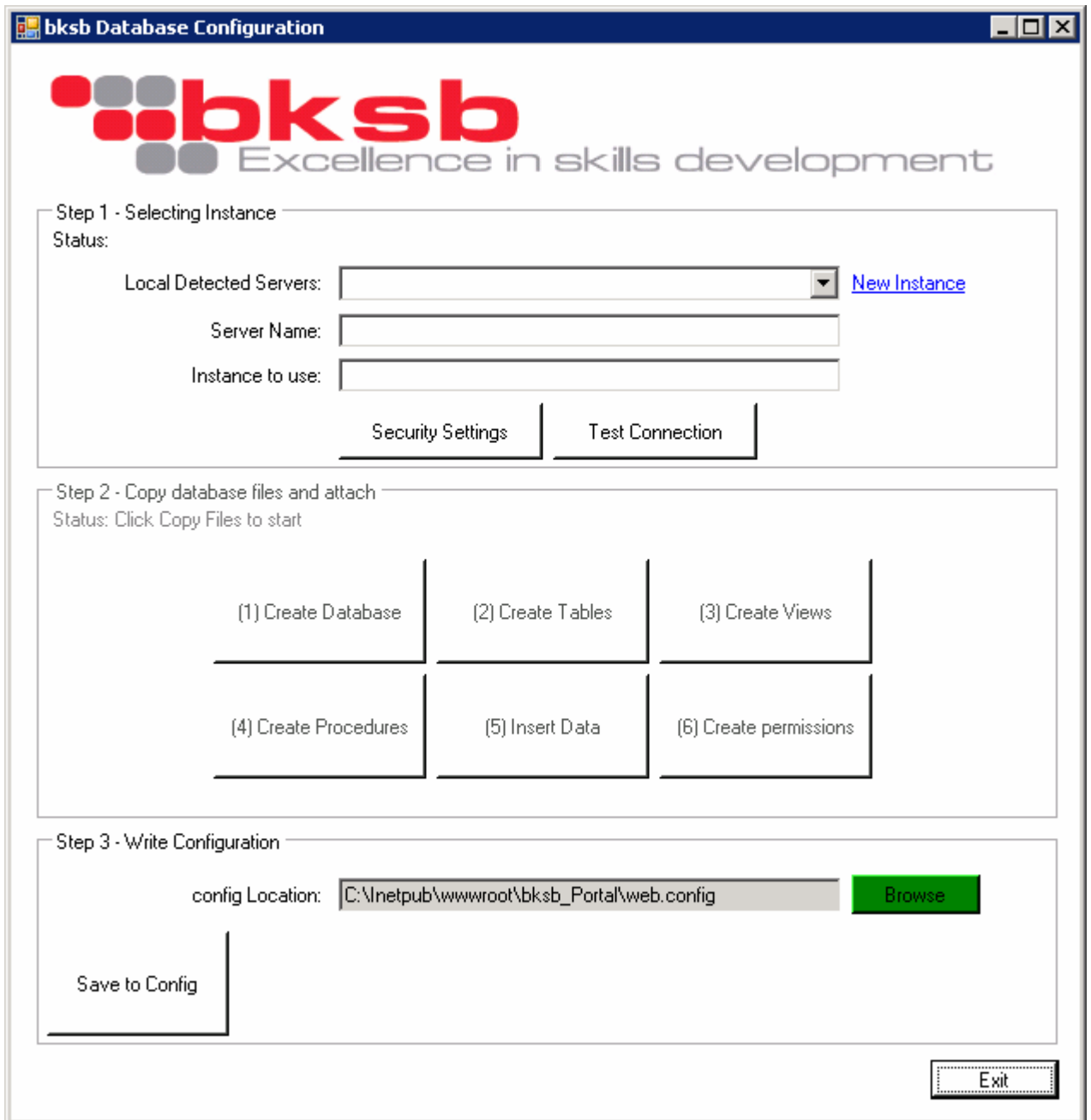
To choose the SQL server that you would like to create the bksb database on you have 2 options:

1. Selected a automatically detected SQL 2005 server from the “Local Detected Servers” List.
2. Enter the remote or local servers details manual
 - a. Enter the server name
 - b. Enter Instance name (for SQL express and 2005 enterprise when instances are installed)
 - c. Configure “Security Setting” (Default setting of Integrated security usually works)

Testing the connection

Click ‘Test Connection’ [Figure 2]

If any errors occur in the testing of the connection, then they will be shown in a message box along with the details of the error.



bksb Database Configuration

bksb
Excellence in skills development

Step 1 - Selecting Instance
Status:

Local Detected Servers: [New Instance](#)

Server Name:

Instance to use:

Step 2 - Copy database files and attach
Status: Click Copy Files to start

(1) Create Database	(2) Create Tables	(3) Create Views
(4) Create Procedures	(5) Insert Data	(6) Create permissions

Step 3 - Write Configuration

config Location:

[Figure 1]

Create database

Creates a new database called bksb_mini

Create Tables

Creates the SQL tabled needed for the assessments and results.

Create Views

Creates the SQL views needed to link learner data

Create Procedures

Creates the SQL Procedures used to Select, insert and update data a list of SQL procedures can be found on www.bksb.co.uk

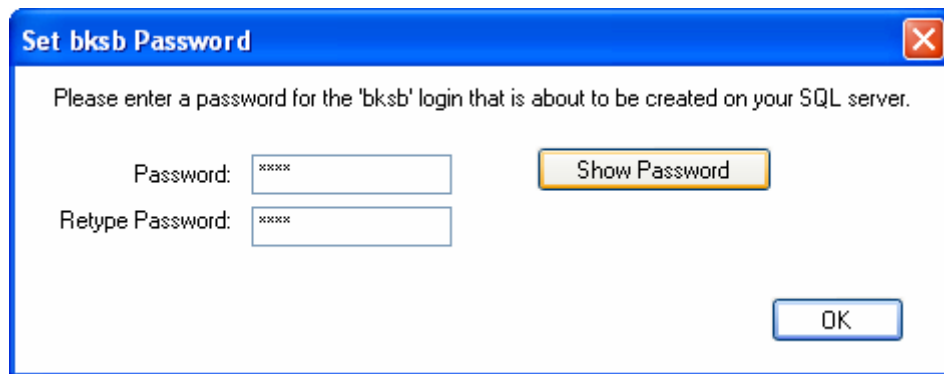
Insert Data

Inserts all the predefined rows of data needed for the software to run.

Create permissions

The 'Create permissions' button creates an SQL user called 'bksb' on the server with the password supplied as in [Figure 2]. You must retype the password correctly before it can be used.

If you are having issues with the passwords not matching, you can click the 'Show Password' which will display the password in plain text.



[Figure 2]

Browse

The 'Browse' button is used to locate the configuration file for the application.

For the **Web Installation** you would select the web.config file.

For the **Stand-alone Installation** you would select the bksbStandalonev3.exe.config file.

Save to Config

The 'Save to Config' button is used to write the SQL connection string to the selected config file you chose from the 'Browse' button.

When the application has successfully saved the configuration, you will receive a message box saying "Congratulations the configuration file has now been updated. You may now close the configuration window."

You may now exit the configuration tool and launch the software.

Advanced settings

Web.config Settings

The web.config only has 1 element which will generally be changed - the 'ConnectionString'.

ConnectionString

See example and usage of 'ConnectionString' on the next page.

```
<add name="ConnectionString" connectionString="Data
Source=bksb\sqlexpress;Initial Catalog=bksb_Mini;Persist Security
Info=True;User ID=bksb;Password=bksb" providerName="System.Data.SqlClient" />
```

Data Source=bksb\sqlexpress;	Data Source is the name of your server and instance name. In this example, the server name is <code>bksb</code> and the instance name is <code>sqlexpress</code> .
Initial Catalog=bksb_Mini;	Initial Catalog is the name of the database which you wish to use. In the example, this is the <code>bksb_Mini</code> database.
Persist Security Info=True;	Persist Security Info is used to securely send the password to the SQL server and should always be set to <code>True</code> .
User ID=bksb;	User ID is the user login name for connecting the software to the SQL Server. The default setting for this is <code>bksb</code> as the 'Database Configuration Tool' uses <code>bksb</code> as the default login name.
Password=bksb	Password The Password can be set as whatever you want, as long as it matches the User ID password you set up on the server.
providerName="System.Data.SqlClient"	Never change the <code>providerName</code> as it is used by the webpages to determine how to access the SQL server.

ClientSettings.config Settings

```
<add key="AdminPassword" value="123" />
```

- The `AdminPassword` key is used to set the password for accessing the Group/Student Management interface.
- Acceptable `value`: Alpha/Numeric

```
<add key="ShowResourceLinks" value="true" />
```

- The `ShowResourceLinks` key is used to define whether links to the resources should be shown on the results page.
- Acceptable `value`: True or False

```
<add key="Entry1-3_Location" value="C:\Resources\#CD E1-3 2008\" />
```

- The `Entry1-3_Location` key is used to define where the resources for Entry 1-3 are located. The location must be on a local hard drive and must be set up with read permissions for the group 'everyone'.
- Acceptable `value`: Alpha/Numeric and \

```
<add key="Level1-3_Location" value="C:\Resources\#CD Level 1-3 2008\"/>
```

- The `Level1-3_Location` key is used to define where the resources for Level 1-3 are located. The location must be on a local hard drive and must be set up with read permissions for the group 'everyone'.
- Acceptable `value` Alpha/Numeric and \

```
<add key="ShowPercentage" value="true"/>
```

- The `ShowPercentage` key is used to define whether the assessment percentage should be shown on the Diagnostic assessment results page.
- Acceptable `value` True or False

```
<add key="ShowGroupReferenceList" value="true"/>
```

- The `ShowGroupReferenceList` key is used to define whether the login screen should have a list of groups for the learner to select from. After a learner selects a group and clicks to login, they will be assigned to the selected group.
- Acceptable `value` True or False

```
<add key="AllowRegistration" value="true"/>
```

- The `AllowRegistration` key is used to either turn on or off the function to allow learners to enter a reference which does not exist and create it themselves. Turning this on means that you do not need to pre-populate the database of users as they can enter their reference along with first name and surname and create a new learner login.
- Acceptable `value` True or False

```
<add key="AllowIntegratedLogin" value="true"/>
```

- The `AllowIntegratedLogin` key is used to specify whether or not to populate the login screen with the details of the current user from Active Directory. You must turn off anonymous access in IIS under the Directory Security tab of the virtual directory properties dialog. As well as turning anonymous access off you must select an authentication method e.g. Basic authentication and or Digest authentication. The name is filled in using the FullName field in Active Directory and therefore may not be fully populated if name contains either more than 1 space or no space at all.
- Acceptable `value` True or False

Every web application has an errors.aspx file, in which displays all errors for all applications including date/time, current username and the error message generated.

Linking from moodle (Next Page)

Linking from moodle

It is now possible to create a link on moodle which will log a user directly into the bksb portal without the need to re-enter details. If the learner has not used the software before then their user will be created automatically.

1. Log into moodle as an administrator
2. Turn Editing on
3. Create a new resource (Link to file or Website)
4. Give the link a name e.g. bksb Portal
5. In the Parameters panel click "Show Advanced"
6. Set the Variable names as below (Example screenshot below)
 - a. Reference
 - b. FirstName
 - c. LastName

Parameters * Hide Advanced

Variable name=Parameter*	Reference	User - Username
Variable name=Parameter*	FirstName	User - First name
Variable name=Parameter*	LastName	User - Surname
Variable name=Parameter*		Choose parameter...
Variable name=Parameter*		Choose parameter...